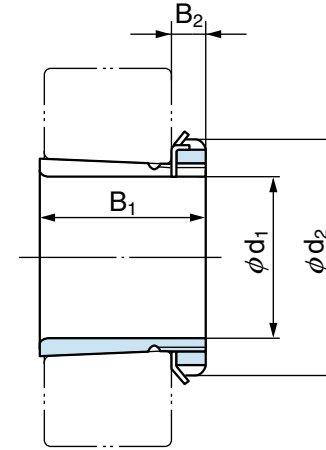


Adapter Assemblies

Series H3/HE3/HS3



Bearing bore No.	Dimensions (mm)						Mass ⁽¹⁾ (kg) (reference)	Adapter Ass'y No.			Part No.		
	d ₁			d ₂	B ₁	B ₂		H	HE	HS	Adapter sleeve ⁽²⁾	Locknut	Lock-washer
	H	HE	HS										
04	17	–	–	32	28	7	0.045	H304X	–	–	A304X	AN 04	AW 04X
05	20	19.050	–	38	29	8	0.075	H305X	HE305X	–	A305X	AN 05	AW 05X
06	25	25.400	22.225	45	31	8	0.109	H306X	HE306X	HS306X	A306X	AN 06	AW 06X
07	30	–	28.575	52	35	9	0.142	H307X	–	HS307X	A307X	AN 07	AW 07X
08	35	31.750	34.925	58	36	10	0.189	H308X	HE308X	HS308X	A308X	AN 08	AW 08X
09	40	38.100	–	65	39	11	0.248	H309X	HE309X	–	A309X	AN 09	AW 09X
10	45	44.450	41.275	70	42	12	0.302	H310X	HE310X	HS310X	A310X	AN 10	AW 10X
11	50	50.800	47.625	75	45	12	0.345	H311X	HE311X	HS311X	A311X	AN 11	AW 11X
12	55	–	53.975	80	47	13	0.393	H312X	–	HS312X	A312X	AN 12	AW 12X

Notes (1) The masses in the table are for H series.

(2) The numbers in the table mean sleeves for H series. Sleeves for HE or HS series have prefix AE or AS.

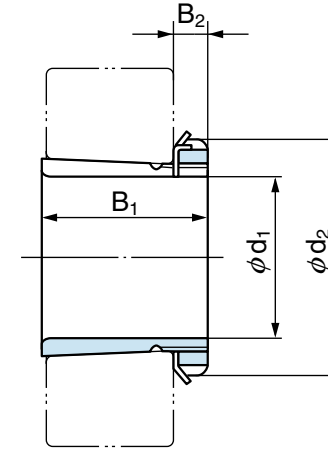
Reference Suffix X means narrow axial slot type.

For this type sleeves, only lockwashers with straight inner tab can be used.



Adapter Assemblies

Series H3/HE3/HS3



Bearing bore No.	Dimensions (mm)						Mass ⁽¹⁾ (kg) (reference)	Adapter Ass'y No.			Part No.		
	d ₁			d ₂	B ₁	B ₂		H	HE	HS	Adapter sleeve ⁽²⁾	Locknut	Lock-washer
	H	HE	HS										
13	60	57.150	60.325	85	50	14	0.459	H313X	HE313X	HS313X	A313X	AN 13	AW 13X
14	60	–	–	92	52	14	0.723	H314X	–	–	A314X	AN 14	AW 14X
15	65	63.500	66.675	98	55	15	0.830	H315X	HE315X	HS315X	A315X	AN 15	AW 15X
16	70	69.850	–	105	59	17	1.03	H316X	HE316X	–	A316X	AN 16	AW 16X
17	75	76.200	73.025	110	63	18	1.18	H317X	HE317X	HS317X	A317X	AN 17	AW 17X
18	80	–	79.375	120	65	18	1.37	H318X	–	HS318X	A318X	AN 18	AW 18X
19	85	82.550	85.725	125	68	19	1.56	H319X	HE319X	HS319X	A319X	AN 19	AW 19X
20	90	88.900	–	130	71	20	1.69	H320X	HE320X	–	A320X	AN 20	AW 20X
21	95	–	–	140	74	20	1.93	H321X	–	–	A321X	AN 21	AW 21X
22	100	101.600	–	145	77	21	2.18	H322X	HE322X	–	A322X	AN 22	AW 22X

Notes (1) The masses in the table are for H series.

(2) The numbers in the table mean sleeves for H series. Sleeves for HE or HS series have prefix AE or AS.

Reference Suffix X means narrow axial slot type.

For this type sleeves, only lockwashers with straight inner tab can be used.