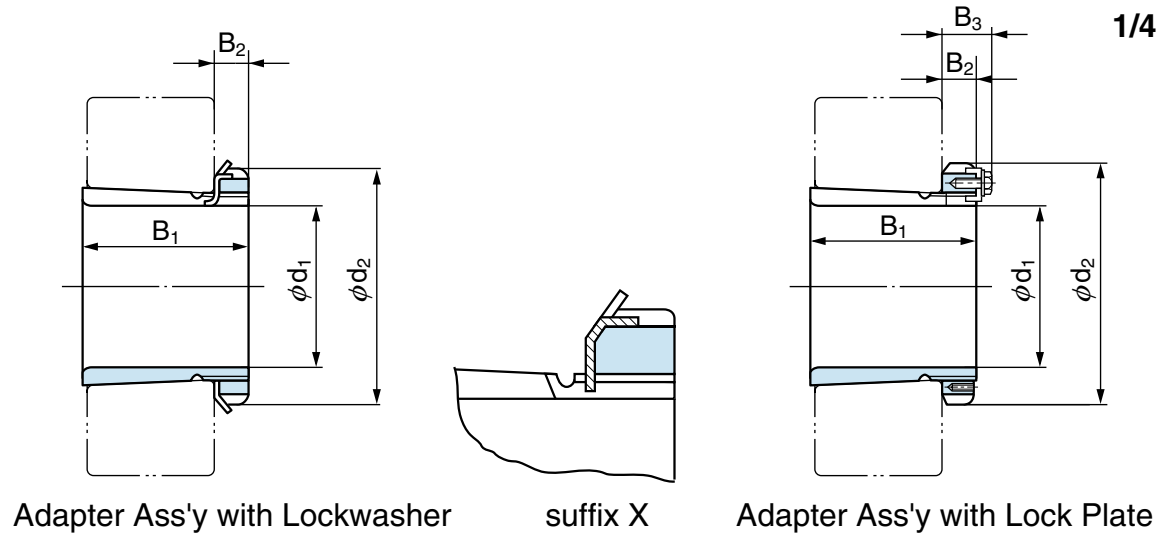


Adapter Assemblies

Series H23/HE23



Bearing bore No.	Dimensions (mm)						Mass ⁽¹⁾ (kg) (reference)	Adapter Ass'y No.		Part No.			
	d ₁		d ₂	B ₁	B ₂	B ₃		H	HE	Adapter sleeve ⁽²⁾	Locknut	Lock-washer	Lock Plate
	H	HE											
04	17	—	32	31	7	—	0.049	H2304X	—	A2304X	AN 04	AW 04X	—
05	20	19.05	38	35	8	—	0.087	H2305X	HE2305X	A2305X	AN 05	AW 05X	—
06	25	25.40	45	38	8	—	0.126	H2306X	HE2306X	A2306X	AN 06	AW 06X	—
07	30	—	52	43	9	—	0.165	H2307X	—	A2307X	AN 07	AW 07X	—
08	35	31.75	58	46	10	—	0.224	H2308X	HE2308X	A2308X	AN 08	AW 08X	—
09	40	38.10	65	50	11	—	0.280	H2309X	HE2309X	A2309X	AN 09	AW 09X	—
10	45	44.45	70	55	12	—	0.362	H2310X	HE2310X	A2310X	AN 10	AW 10X	—
11	50	50.80	75	59	12	—	0.420	H2311X	HE2311X	A2311X	AN 11	AW 11X	—
12	55	—	80	62	13	—	0.480	H2312X	—	A2312X	AN 12	AW 12X	—

Notes (1) The masses in the table are for H series.

(2) The numbers in the table mean sleeves for H series. Sleeves for HE series have prefix AE instead of A.

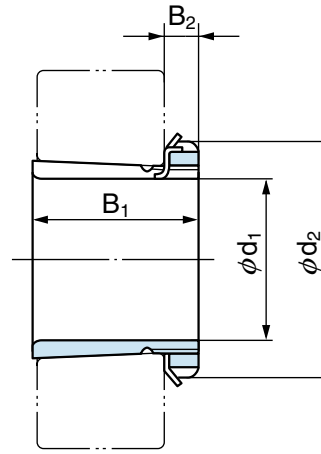
Reference 1. Suffix X means narrow axial slot type. For this type sleeves, only lockwashers with straight inner tab can be used.

2. Inch bore type HS series is also available.

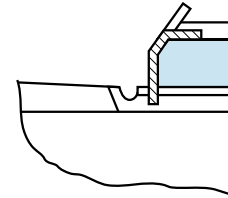


Adapter Assemblies

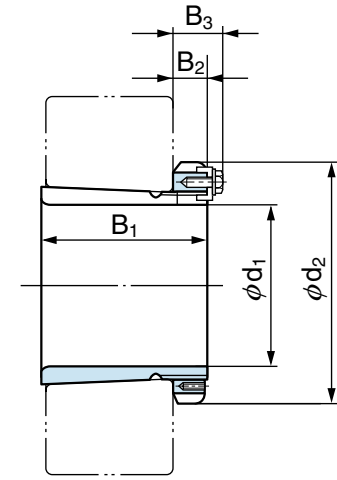
Series H23/HE23



Adapter Ass'y with Lockwasher



suffix X



Adapter Ass'y with Lock Plate

Bearing bore No.	Dimensions (mm)						Mass ⁽¹⁾ (kg) (reference)	Adapter Ass'y No.		Part No.			
	d ₁		d ₂	B ₁	B ₂	B ₃		H	HE	Adapter sleeve ⁽²⁾	Locknut	Lock-washer	Lock Plate
	H	HE											
13	60	57.15	85	65	14	—	0.556	H2313X	HE2313X	A2313X	AN 13	AW 13X	—
14	60	—	92	68	14	—	0.897	H2314X	—	A2314X	AN 14	AW 14X	—
15	65	63.50	98	73	15	—	1.05	H2315X	HE2315X	A2315X	AN 15	AW 15X	—
16	70	69.85	105	78	17	—	1.28	H2316X	HE2316X	A2316X	AN 16	AW 16X	—
17	75	76.20	110	82	18	—	1.45	H2317X	HE2317X	A2317X	AN 17	AW 17X	—
18	80	—	120	86	18	—	1.70	H2318X	—	A2318X	AN 18	AW 18X	—
19	85	82.55	125	90	19	—	1.94	H2319X	HE2319X	A2319X	AN 19	AW 19X	—
20	90	88.90	130	97	20	—	2.15	H2320X	HE2320X	A2320X	AN 20	AW 20X	—
21	95	—	140	101	20	—	2.45	H2321X	—	A2321X	AN 21	AW 21X	—

Notes (1) The masses in the table are for H series.

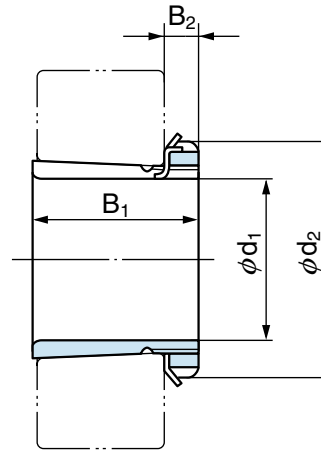
(2) The numbers in the table mean sleeves for H series. Sleeves for HE series have prefix AE instead of A.

Reference 1. Suffix X means narrow axial slot type. For this type sleeves, only lockwashers with straight inner tab can be used.

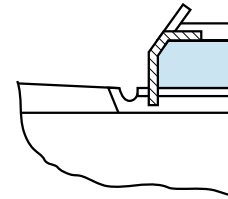
2. Inch bore type HS series is also available.

Adapter Assemblies

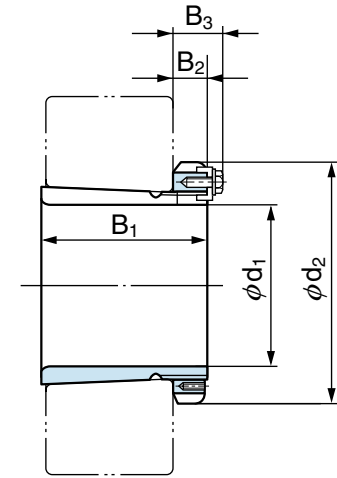
Series H23/HE23



Adapter Ass'y with Lockwasher



suffix X



Adapter Ass'y with Lock Plate

Bearing bore No.	Dimensions (mm)						Mass ⁽¹⁾ (kg) (reference)	Adapter Ass'y No.		Part No.			
	d ₁		d ₂	B ₁	B ₂	B ₃		H	HE	Adapter sleeve ⁽²⁾	Locknut	Lock-washer	Lock Plate
	H	HE											
22	100	101.60	145	105	21	—	2.74	H2322X	HE2322X	A2322X	AN 22	AW 22X	—
24	110	107.95	155	112	22	—	3.20	H2324X	HE2324X	A2324X	AN 24	AW 24X	—
26	115	114.30	165	121	23	—	4.60	H2326	HE2326	A2326	AN 26	AW 26	—
28	125	127.00	180	131	24	—	5.52	H2328	HE2328	A2328	AN 28	AW 28	—
30	135	133.35	195	139	26	—	6.60	H2330	HE2330	A2330	AN 30	AW 30	—
32	140	139.70	210	147	28	—	9.15	H2332	HE2332	A2332	AN 32	AW 32	—
34	150	152.40	220	154	29	—	10.4	H2334	HE2334	A2334	AN 34	AW 34	—
36	160	165.10	230	161	30	—	11.3	H2336	HE2336	A2336	AN 36	AW 36	—
38	170	171.45	240	169	31	—	12.6	H2338	HE2338	A2338	AN 38	AW 38	—

Notes (1) The masses in the table are for H series.

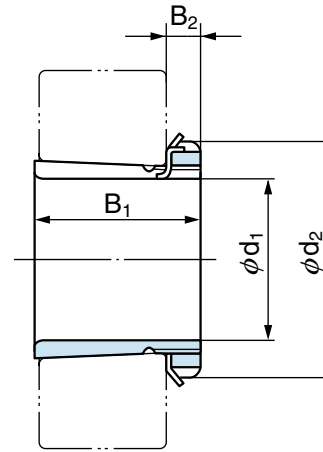
(2) The numbers in the table mean sleeves for H series. Sleeves for HE series have prefix AE instead of A.

Reference 1. Suffix X means narrow axial slot type. For this type sleeves, only lockwashers with straight inner tab can be used.

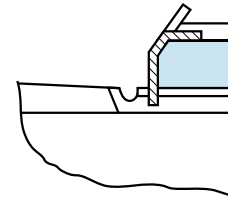
2. Inch bore type HS series is also available.

Adapter Assemblies

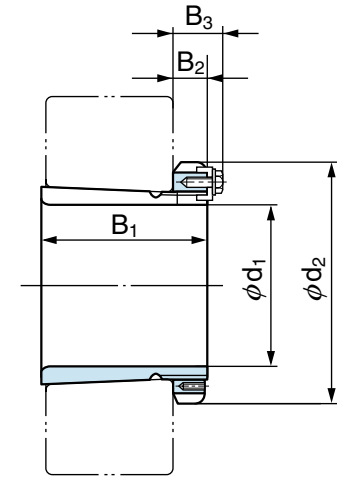
Series H23/HE23



Adapter Ass'y with Lockwasher



suffix X



Adapter Ass'y with Lock Plate

Bearing bore No.	Dimensions (mm)						Mass ⁽¹⁾ (kg) (reference)	Adapter Ass'y No.		Part No.			
	d ₁		d ₂	B ₁	B ₂	B ₃		H	HE	Adapter sleeve ⁽²⁾	Locknut	Lock-washer	Lock Plate
	H	HE											
40	180	177.80	250	176	32	—	13.9	H2340	HE2340	A2340	AN 40	AW 40	—
44	200	—	280	183	32	44	16.6	H2344	—	A2344	AN 44	—	AL 44
48	220	—	300	196	34	46	19.7	H2348	—	A2348	AN 48	—	AL 44
52	240	—	330	208	36	49	24.2	H2352	—	A2352	AN 52	—	AL 52
56	260	—	350	221	38	51	27.8	H2356	—	A2356	AN 56	—	AL 52

Notes (1) The masses in the table are for H series.

(2) The numbers in the table mean sleeves for H series. Sleeves for HE series have prefix AE instead of A.

Reference 1. Suffix X means narrow axial slot type. For this type sleeves, only lockwashers with straight inner tab can be used.

2. Inch bore type HS series is also available.