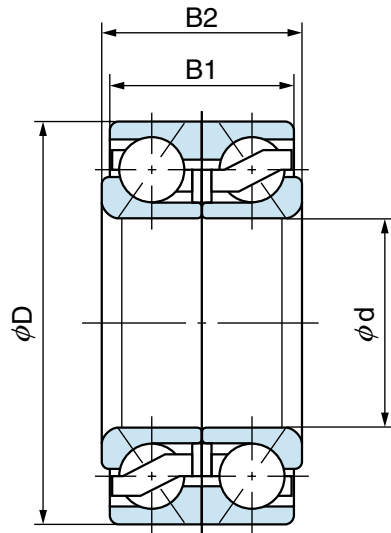
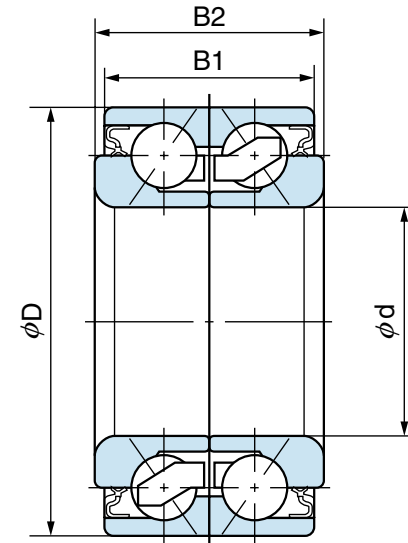


# Wheel Bearings



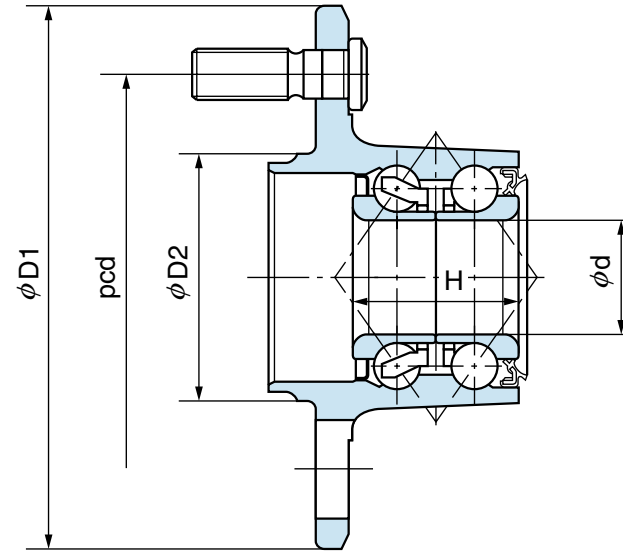
Type A (Open type)



Type B (Contact sealed type)

Bearing No.	Boundary dimensions (mm)				Type
	d	D	B1	B2	
27BVV06-2G	27	60	50	50	B
30BVV06-2G	30	68	45	45	B
32BVV07-7G	32	72	45	45	A
32BVV07-8G	32	72	45	45	A
35BVV07-9G	35	77	42	42	A
38BVV07-10G	38	72	40	40	B
38BVV07-20G	38	73	40	40	B
V1-38BVV07-22G	38	74	40	40	B
38BVV07-26G	38	74	33	36	A
40BVVS6-2NSL	40	80	45	45	B
43BVV08-4G	43	82	45	45	B

# Wheel Hub Units

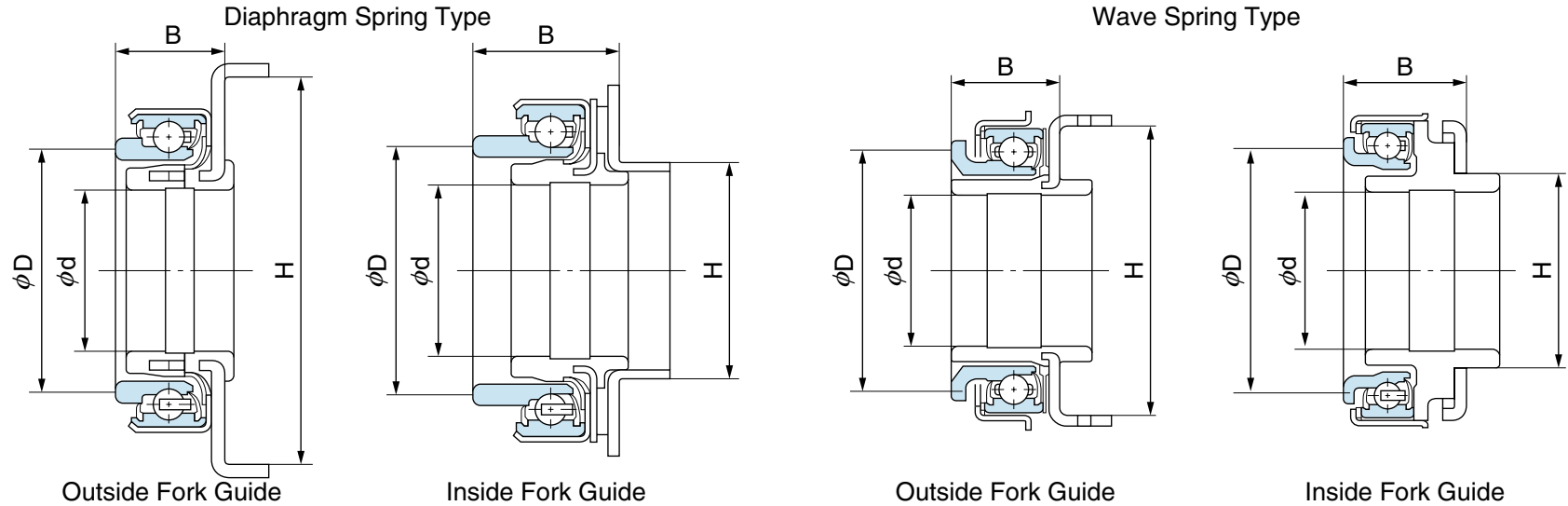


Bearing No.	Boundary dimensions (mm)					
	d	D1	D2	pcd	H	
F25BVV10-7	25	134	61	100	40	
H28BVV10-2 <sup>(1)</sup>	28	134	61	100	40	
H28BVV10-6	28	134	61	100	40	
F28BVV10-M3	28	122	55	100	47	
F28BVV10-M4A <sup>(1)</sup>	28	122	55	100	47	
F30BVV09-3 <sup>(2)</sup>	30	R60.5	—	—	42	
F36BVV11-5	36	140	72	114.3	62	

Note: 1) For Anti-Lock Brake System

2) Without bolts (unnecessary)

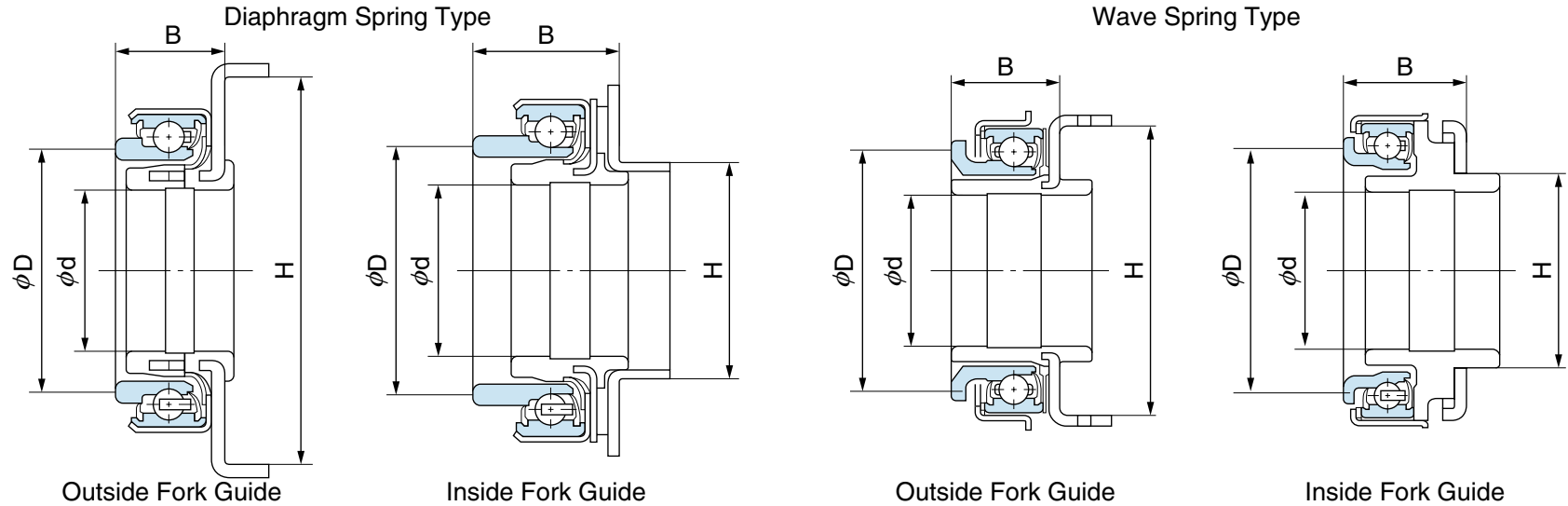
# Self-aligning Clutch-release Bearings



Bearing No.	Boundary dimensions (mm)				Type	
	d	D	B	H	Spring	Fork Guide
44SCRN28P-8	28.1	44	22	35	Wave	Inside
47SCRN31P-1	29	47	20.5	56	Wave	Outside
47SCRN34K-6	29	47	21	38	Diaphragm	Inside
47SCRN40P	31	47	23	68	Diaphragm	Outside
48SCRN32K	31.75	48	21	60	Diaphragm	Outside



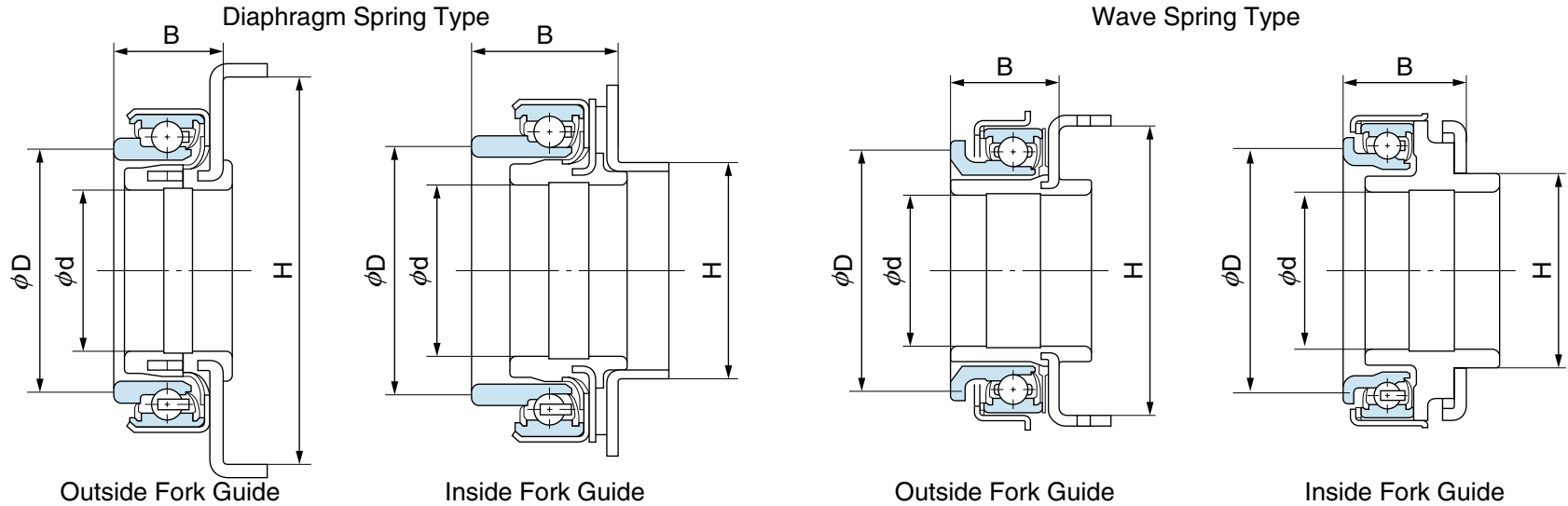
# Self-aligning Clutch-release Bearings



Bearing No.	Boundary dimensions (mm)				Type	
	d	D	B	H	Spring	Fork Guide
50SCRN31P	33	50	22	70.15	Diaphragm	Outside
50SCRN31P-1	33	50	22	79.2	Diaphragm	Outside
50SCRN34P-4	35	50	24	44	Diaphragm	Inside
50SCRN37P-4	35	50	26.9	44	Diaphragm	Inside
50SCRN40P-4	35	50	30	44	Diaphragm	Inside
54SCRN42P	36	54	27	77	Diaphragm	Outside
55SCRN41P	35	55.2	24	72	Diaphragm	Outside
55SCRN41P-1	35	55.2	24	72	Diaphragm	Outside
58SCRN37P	35	58	26.6	44	Diaphragm	Inside
58SCRN43A	35	58	33	44	Diaphragm	Inside

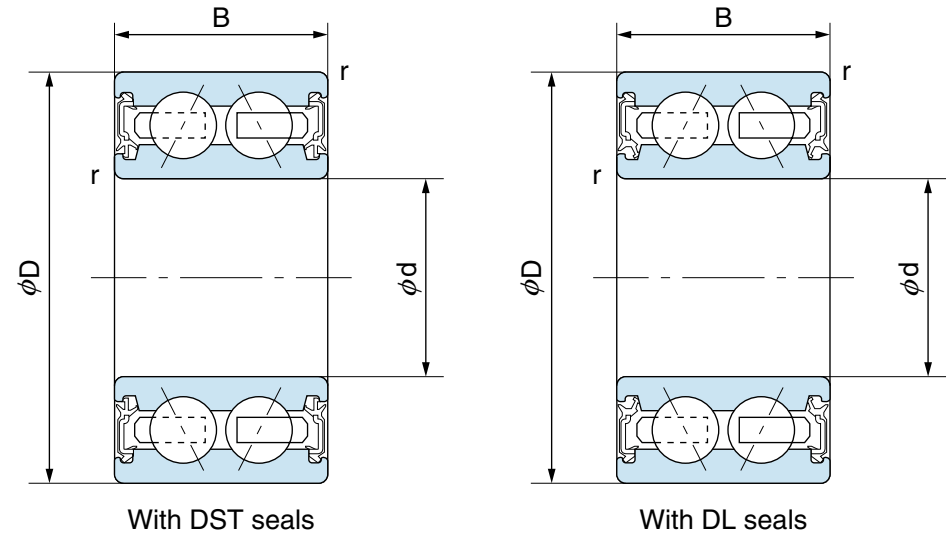


# Self-aligning Clutch-release Bearings



Bearing No.	Boundary dimensions (mm)				Type	
	d	D	B	H	Spring	Fork Guide
60SCRN31T	35	60	25	76	Diaphragm	Outside
60SCRN31P-6	35	60	25	79.2	Diaphragm	Outside
68SCRN43A	35	68	33	44	Diaphragm	Inside
68SCRN46P-2	38	68	34	48	Diaphragm	Inside
68SCRN48P	38	68	37.5	48	Diaphragm	Inside
68SCRN53P	38	68	42.5	48	Diaphragm	Inside
68SCRN58P-4	38	68	47.5	48	Diaphragm	Inside
68SCRN58P-5	38	68	47.5	48	Diaphragm	Inside
68SCRN62P	38	68	51.6	48	Diaphragm	Inside
68SCRN63P-2	35	68	53.3	48	Diaphragm	Inside

## Double-row Angular Contact Ball Bearings for Car Air Conditioning Magnetic Clutch

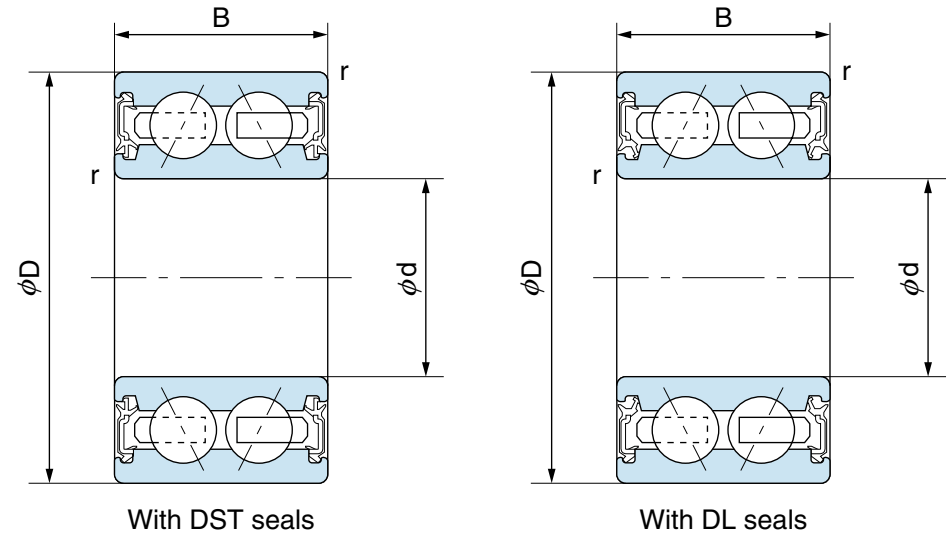


1N=0.102kgf

Bearing No.		Boundary dimensions (mm)				Basic dynamic load rating Cer (N)	Basic static load rating Cor (N)
DST seals	DL seals	d	D	B	r (max)		
30BGS10G-2DST	30BGS10G-2DL	30	52	22	0.3	17900	13800
30BG05S5G-2DST	30BG05S5G-2DL	30	55	23	0.6	19900	15500
32BG05S1-2DST	—	32	55	23	0.6	19900	15500
35BG05S7G-2DST	35BG05S7G-2DL	35	50	20	0.3	11100	10100
35BG05S10G-2DST	30BG05S16G-2DL	35	55	20	0.6	15600	13200
38BG05S6G-2DST	38BG05S6G-2DL	38	54	17	0.3	11900	11500



# Double-row Angular Contact Ball Bearings for Car Air Conditioning Magnetic Clutch



1N=0.102kgf

Bearing No.		Boundary dimensions (mm)				Basic dynamic load rating Cer (N)	Basic static load rating Cor (N)
DST seals	DL seals	d	D	B	r (max)		
40BG05S2G-2DST	—	40	57	24	0.3	17900	13800
40BGS8G-2DST	40BGS8G-2DL	40	62	20.625	0.65	18100	16400
40BGS35G-2DST	40BGS35G-2DL	40	62	24	0.6	18100	16400
40BGS39G-2DST	40BGS39G-2DL	40	66	24	0.6	28500	23100
45BG07S5G-2DST	45BG07S5G-2DL	45	75	32	0.5	33500	27600
75BG02G-2DST	—	75	130	50	2.0	93500	83500